



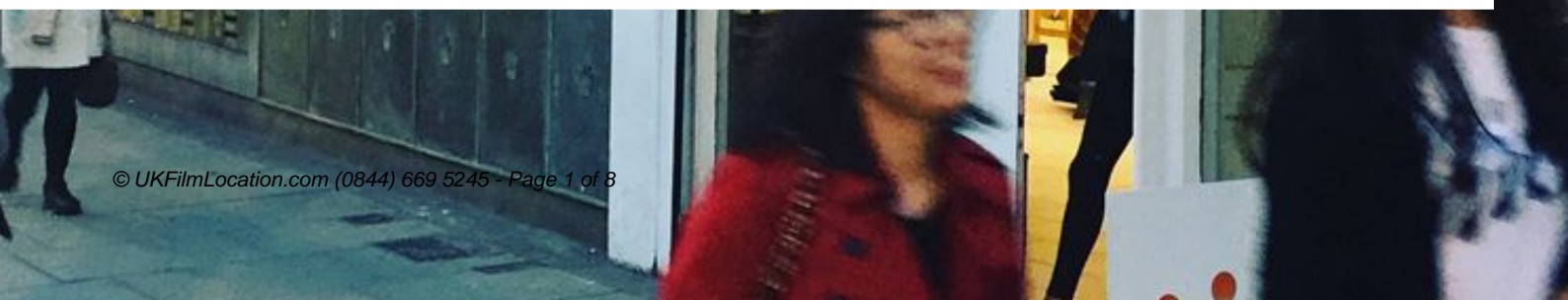
UKFILMLOCATION.com

bringing ideas to life



LON2104 Central London: London Basement Warehouse Space For Filming

Multiple rooms in a grade two listed building with original post office features. 3000sqft ground floor and white painted basement.



LON2104

Central London: London Basement Warehouse Space For Filming

Multiple rooms in a grade two listed building with original post office features. 3000sqft ground floor and white painted basement.



Location: LON2104 : London, United Kingdom

Within the M25: Yes

Travel Zone: Travel Zone 1

Categories: Galleries | Art Studios | Warehouse Locations |

Facilities

- 3 Phase Power
- Domestic Power
- Fire Hydrant (close by)
- Green Room
- Internet Access
- Mains Water
- Shoot and Stay
- Toilets

Parking

- Off Street Parking

Interior

White walls, stripped walls, white floor tiles, parquet flooring, high ceilings, pillars, soundproof basement, old walk in safe, mail chute, old copper post boxes, old post sorting chutes

Rooms

- Bar
- Basement
- Changing Room
- Dance floor
- Hallway
- Reception
- Retail/Pop-Up Space

Kitchen Facilities

- Cutlery and Crockery
- Pots and Pans
- Prep Area
- Small Appliances

Interior Features

- Concrete Pillars
- Industrial Backdrops

Floors

- Concrete Floor
- Real Wood Floor
- Tiled Floor

Windows & Walls

- Bare Plaster
- Blacked Out
- Exposed Brick Walls
- Industrial Windows
- Large Windows
- Painted Walls

Exterior

Views

- City Scape View

