



NW2160 Architecturally Interesting Building For Filming

Remarkable modern architecture, stunning waterfront location, spectacular views. Impressive selection of historic objects and vehicles in large open plan gallery spaces.

NW2160

Architecturally Interesting Building For Filming

Remarkable modern architecture, stunning waterfront location, spectacular views. Impressive selection of historic objects and vehicles in large open plan gallery spaces.



Location: Greater Manchester, United Kingdom

Within the M25: No

Categories: Designer Contemporary | Museums

Features:

Facilities	Floors	Interior Features	Parking
<ul style="list-style-type: none">• 3 Phase Power• Domestic Power• Green Room• Internet Access• Toilets	<ul style="list-style-type: none">• Concrete Floor• Painted Floors	<ul style="list-style-type: none">• Concrete Pillars• Industrial Backdrops• Modern Staircase• Steel Pillars	<ul style="list-style-type: none">• Secure Parking
Rooms	Views	Walls & Windows	
<ul style="list-style-type: none">• Office	<ul style="list-style-type: none">• City Scape View• Industrial View	<ul style="list-style-type: none">• Industrial Windows• Painted Walls	

Interior

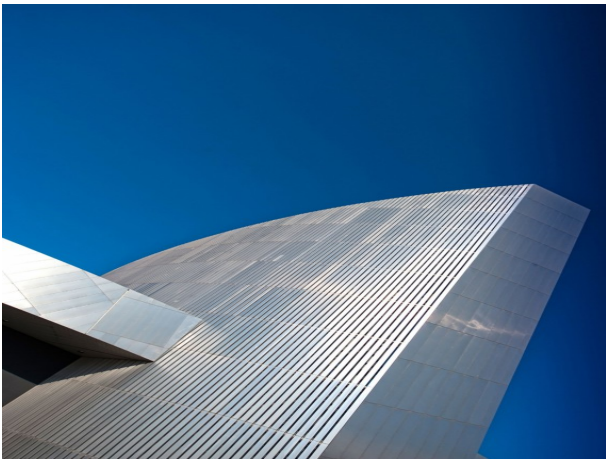
The building's design is fragmented into three 'shard' like structures. The impressive open plan exhibition spaces features six towering enclosed spaces displaying an array of materials and objects relating to war and conflict. Exclusive to the main exhibition space is the potential to create your own immersive cinematic experience that presents film, imagery and sound using the high interior walls. These bespoke digital wallpapers are digitally mastered and developed around any theme you choose and provide a spectacular filming backdrop.

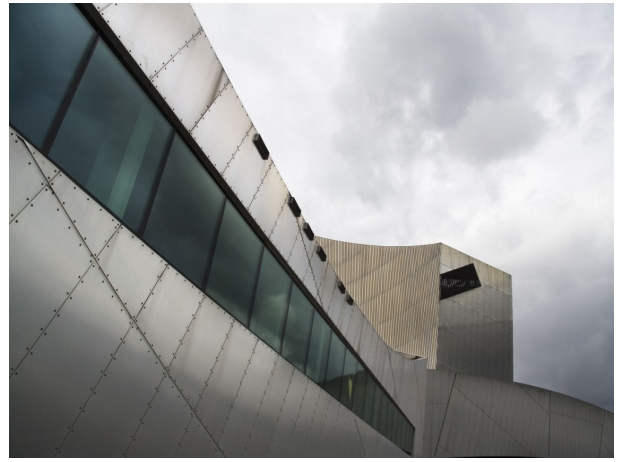
At the front of this modern and stylish building is the café, a light and airy space with a fantastic view of The Quays waterfront. The décor inside the café is simple, with pale grey walls, dark tiled flooring and large pillars throughout this large open space.

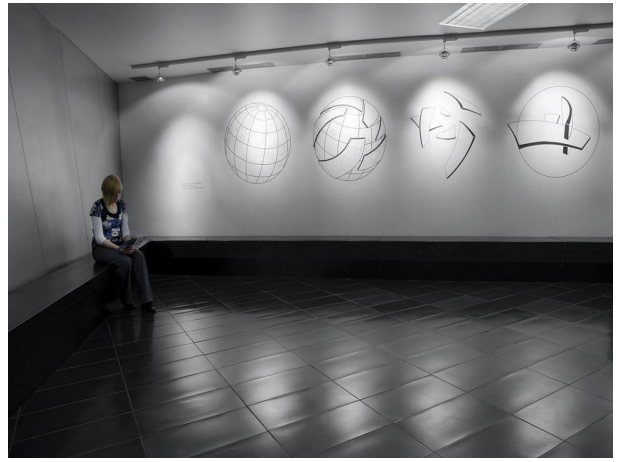
The Air Shard is perhaps one of the most striking aspects of the building as this tower juts high into the Manchester skyline soaring 55m above ground. Within this tower is a viewing platform providing incredible panoramic views over The Quays. The unique architectural design of the museum makes this a fantastic choice for any filming opportunities.

Exterior

This iconic building located in The Quays fantastic waterfront destination in Manchester. The aluminium-clad building with jutting angles has become an iconic part of the Manchester skyline since it was built in 2002 and makes for a unique venue for filming and photography. The exterior of this modern, industrial style building is lined with striking metallic paneling, providing a unique opportunity for creative filming and photography.











THE NEW CITROËN C3 PICASSO

Illustration: Citroën - May 2010 - Copyright: Citroën - All rights reserved.



