



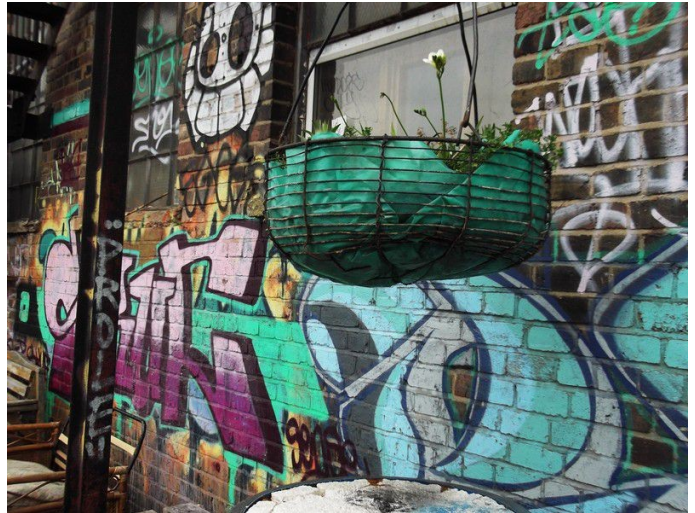
LON1081 Quirky London Warehouse Film Location

This is a high ceiling warehouse with mezzanine floor and offering many opportunities for filming or photo shoots

LON1081

Quirky London Warehouse Film Location

This is a high ceiling warehouse with mezzanine floor and offering many opportunities for filming or photo shoots



Location: East London, London, United Kingdom

Within the M25: No

Categories: Warehouse Locations | Urban, Alleyways & Graffiti

Features:

Facilities

- 3 Phase Power
- Domestic Power
- Green Room
- Mains Water
- Toilets

Floors

- Concrete Floor
- Mezzanine Floor
- Painted Floors

Interior Features

- Furnished
- Industrial Backdrops

Parking

- Secure Parking

Views

- Industrial View

Walls & Windows

- Exposed Brick Walls
- Industrial Windows
- Skylights

Interior

This is a high ceiling warehouse with many opportunities for filming or photo shoots including:- Graffiti walls- Bicycle workshop- Long, dark passage (approx. 48' x 16')- Mezz floor- Ability to film from mezz or ground floor
Dimensions* Main Space - 16m x 12m* Height Floor to cross bar 7.32m* Sub Space - 20m x 5m* Door access - 5 metres high
Vehicle Access To The Warehouse* Vehicle access is possible* No height restrictions* Very wide shutter entrance
Power Available* 3-Phase* Domestic Parking* 4 vehicles, or more if less warehouse floor is needed
Disabled Facilities* Disable access-yes* Toilets- yes x7 and 2 showers
Nearest rail/tube* Bow/DLR-underground(furthest),* Hackney wick/over ground(5min/closest)

Exterior

Views of the olympic park.



