



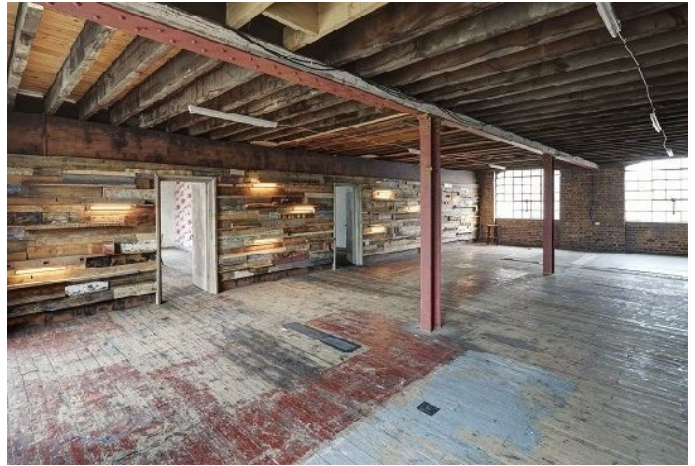
## **LON1337 South East London: Warehouse with Textured Walls For Filming**

A 3 storey listed Victorian warehouse in central London location available for filming and photo shoots.

# LON1337

## South East London: Warehouse with Textured Walls For Filming

A 3 storey listed Victorian warehouse in central London location available for filming and photo shoots.



**Location:** South East London, London, United Kingdom

**Within the M25:** Yes

**Categories:** Warehouse Locations

### Features:

#### Exterior Features

- Roof Terrace

#### Facilities

- Domestic Power
- Green Room
- Mains Water
- Toilets

#### Floors

- Real Wood Floor

#### Interior Features

- Steel Pillars

#### Parking

- Secure Parking

#### Walls & Windows

- Exposed Brick Walls
- Painted Walls
- Wallpapered Walls
- Wood Clad Walls

## **Interior**

Property Features Include:

- Up to 3 floors of unique and inspiring - Ex-industrial space - Exposed brick walls - Wooden beams and floors - A private yard with parking for 20 cars - Rooftop access with a city view - A range of creative, bespoke and event management services

May be combined with LON1342, LON1343, LON1344



